

# THEOLOGY



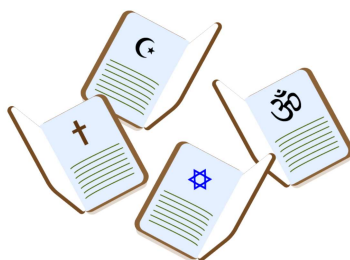
## RELIGION AND GOVERNMENT

- **RELIGIOUS LEADER**  
Offer spiritual and moral guidance, and lead public worship and other religious ceremonies.
- **CIVIL SERVICE ADMINISTRATOR**  
Carry out government policies and deliver administrative services to the public, such as handling enquiries and processing payments.
- **MEMBER OF PARLIAMENT (MP)**  
Represent the political beliefs of those who live in their constituency or area.



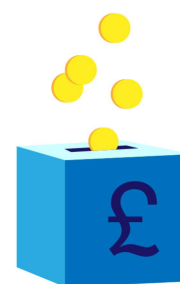
## EDUCATION

- **FURTHER EDUCATION TEACHER**  
Usually teach adult learners and students aged 14 to 16 on work related learning.
- **HEADTEACHER**  
Manage schools. They create the right conditions for children to flourish and staff to succeed.
- **SPECIAL EDUCATION TEACHER**  
Work with children and young people who need extra support.
- **PRIMARY SCHOOL TEACHER**  
Look after the educational, social, physical, and emotional development of children from ages 5 to 11.



## FAMILY AND COMMUNITY

- **CHARITY DIRECTOR**  
Plan ways to develop a charity's services, generate income, and raise awareness of its work.
- **FAMILY SUPPORT WORKER**  
Help and advise families with long- or short-term difficulties.
- **THERAPIST**  
Help people to discuss their problems and feelings in a confidential environment.



## FUNERAL SERVICE

- **EMBALMER**  
Preserve and prepare bodies from the time of death until they can be buried or cremated.
- **FUNERAL DIRECTOR**  
Make arrangements for burials or cremations, provide support, and advice for the bereaved.
- **CEMENTARY WORKER**  
Prepare and maintain graves and memorial sites.



## SKILLS REQUIRED

- teaching and leadership
- dignified approach to work
- attention to detail
- public speaking skills
- sensitivity

## SALARY

### Clergy:

UK annual median: £27,117

### Welfare professionals:

London annual median: £38,723

Top 3 regions: London (£38,723), Scotland (£38,027), East Midlands (£35,459)

## PROSPECTS

### Business, media, and public service professionals:

UK growth: +11.8% from 2017 to 2027, creating 219,107 jobs

London growth: +10.3% from 2017 to 2027, creating 59,056 jobs