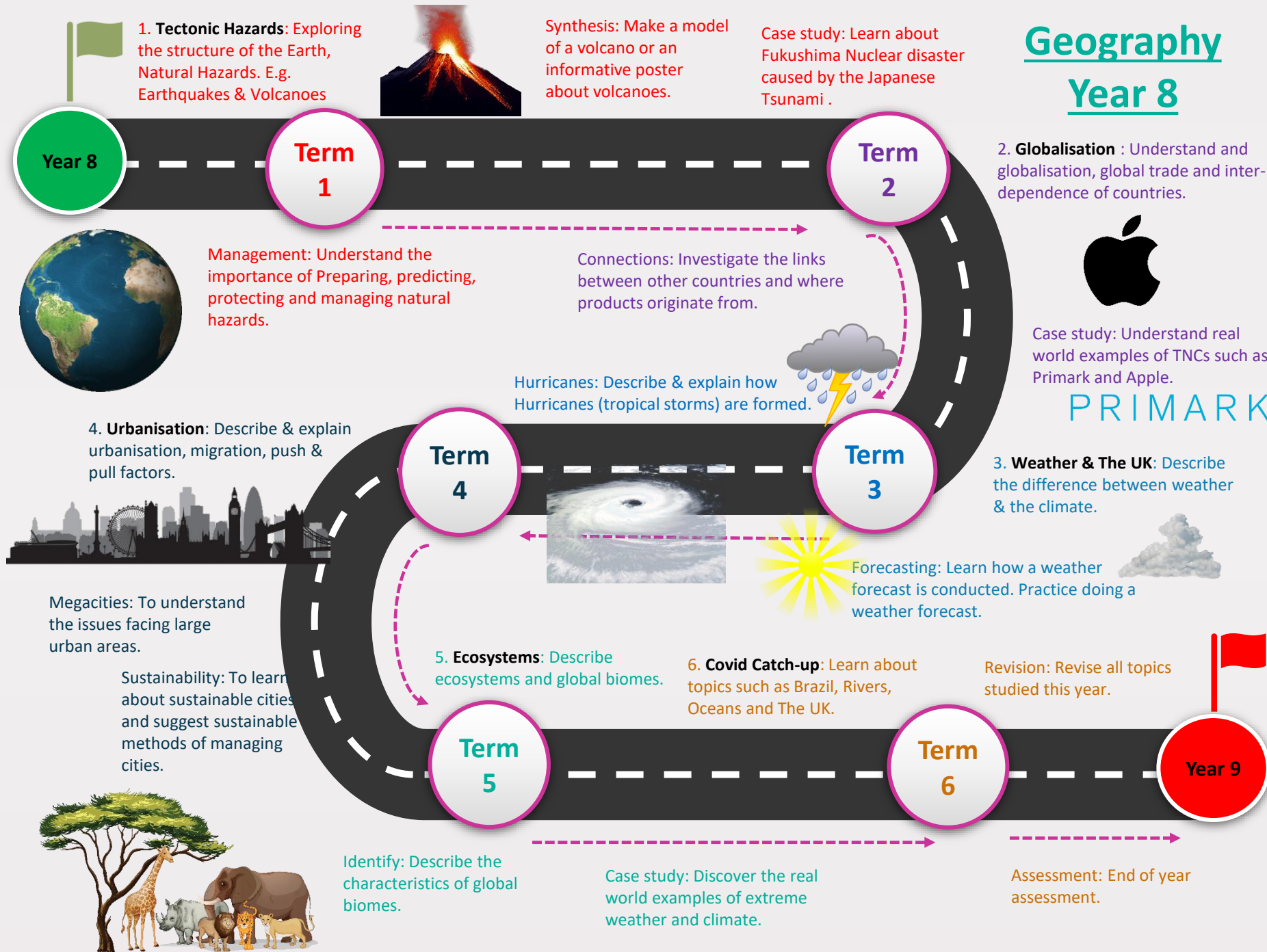


# Geography

## Year 8



# Geography

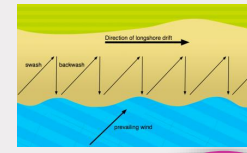
## Year 9

Year 9

1. **Coasts:** Exploring the coast, uses of the coast, wave formation, type of waves and weathering & erosion.



Synthesis: Draw diagrams: longshore drift, Headland to Stump formation etc.



Term 1



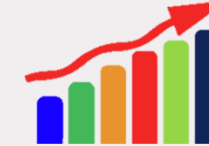
Management: Understand the benefits and disadvantages of hard and soft engineering to protect coastal areas.

Connections: Investigate the uneven development around the world. E.g. Brandt Line.



Term 2

2. **Development** : Describe the meaning of development, types of development (LIC, MIC & HIC).



Case study: Understand the nature of poverty in the UK and another LIC.

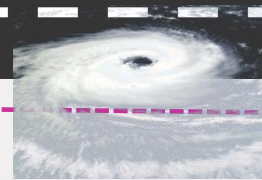


3. **Climate Change:** Describe climate change, global warming and the greenhouse effect.



Term 3

Exploring: Understand the impacts of climate change.



Term 4

4. **Resource Management:** Describe types of resources such as food, energy and water.



Forecasting: To understand and predict issues around global energy.

Sustainability: To learn about sustainable methods of living and how we can make our school more sustainable.

5. **Sustainability:** Describe sustainability and the benefits and disadvantages of it.

6. **Fieldwork & Covid Catch-up:** Learn about topics such as Weather, Ecosystems , Urbanisation

Revision: Revise all topics studied this year.

Term 5

Identify: How can we make the school more sustainable?



Management: Suggest different methods of reducing the impacts of climate change.

Investigate: Collect primary data around our school to suggest improvements.

Assessment: End of year assessment.

Term 6

Year 10

# GCSE Geography

## Year 10

GCSE Geography (AQA 8035)

Unit 1 – Living with the **physical** environment  
Unit 2 – Challenges in the **human** environment  
Unit 3 – Geographical Applications (Fieldwork)

1.2 End of Unit Test



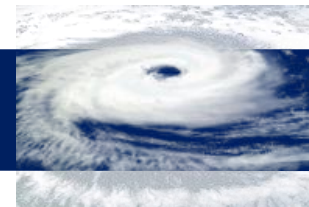
### 1.2 The Living World

What Is An Ecosystem? What Are Biomes?  
Ecosystems  
Tropical Rainforests  
Cold Environments

1.1 End of Unit Test



**1.1 Natural Hazards**  
What Is A Natural Hazard?  
Tectonic Hazards  
Weather Hazards  
Climate Change



What are plate boundaries?



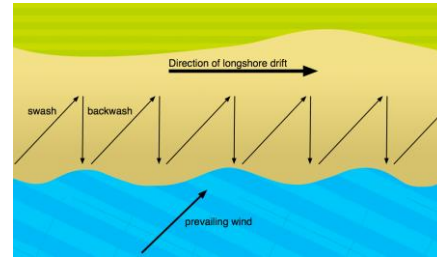
### Introduction

Specification requirements and overview. GCSE 9-1 grading system. Course calendar. Course textbooks and revision guides. Where to find resources. Workbooks. Homework calendar. Student/Teacher expectations.



Rivers  
Coasts

**1.3 Physical Landscapes in the UK**  
What Are The Physical Features Of The UK?



1.3 End of Unit Test



Physical Geography Fieldtrip  
Investigate Coast (Southend)



Exam  
Paper 1



YEAR  
**10**  
GCSE

START OF GCSE



## 2.1 End of Unit Test



## 2.2 Fieldwork Re-cap

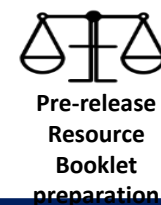
Understand and explain the entire fieldtrip process including data collection, presentation and evaluation.

## 2.3 End of Unit Test



Revision

## Testing



Pre-release  
Resource  
Booklet  
preparation

## Exam Paper 1



## Exam Paper 3

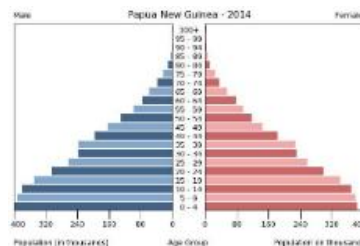


## Exam Paper 2



## 2.0 Graphical Skills & Statistics

Bar charts, Pie charts, Choropleth maps, Pictograms, Scatter graphs, Line graphs, Population pyramids, Isoline, Dot maps, Mean, Median & Mode, Range, Frequency, Quartile & Inter-quartile range, Dispersion graphs, Percentiles, Trend lines,



## 1.9 Exam Skills

How to answer exam questions. BUG rule, SEE, PEEL.  
What are examiners looking for?

## 1.8 Practice Test



## 1.7 Geographical Skills

Decision Making Exercise (DME), Cartographic skills, OS Map Symbols, 4-6 figure grid references. Contour lines, Distance, Scale, Compass directions, Latitude & Longitude, Sketch drawings/diagrams.

## 6 End of Unit Test



## 1.5 End of Unit Test



## 1.6 Resource Management

What are resources?  
Energy  
Water or Food

## 1.5 Urban Issues & Challenges

What Is Urbanisation?  
The Urban World  
Urban Change In The UK  
Urban Sustainability

PAPER 2

## Human Geography Fieldtrip

Investigate Urban Change  
Docklands

## 1.4 The Changing Economic World

Development Gap  
Newly Emerging Economies (Nigeria Case Study)  
The Changing UK Economy



# GCSE GEOGRAPHY - LEARNING JOURNEY

YEAR  
**11**  
GCSE